

2024 ANNUAL REPORT



Steinbach
Community
Foundation

Multiplying Your Generosity Forever

THANK-YOU

All gifts small or large add up to a strong, vibrant, and caring community. Thank you to all SCF donors for your partnership and investment in communities in southeast Manitoba.

THE STEINBACH COMMUNITY FOUNDATION INC.

We acknowledge that the Steinbach Community Foundation operates on the traditional territories of the Anishinaabeg, Cree, Oji-Cree, Dakota, and Dene peoples, and on the homeland of the Métis Nation. We recognize that our community is located on Treaty 1 and Treaty 3 Territories, and we respect the spirit and intent of the Treaties made with these Nations.

We honor the history and contributions of Indigenous peoples and are committed to moving forward in partnership, in the spirit of reconciliation and collaboration. We strive to foster a community that respects and celebrates the diverse cultures and traditions of all who call this land home.

Steinbach Community Foundation

Unit 1 - 385 Loewen Blvd.
Steinbach, MB R5G 0B3



204-823-4521



admin@steinbachcf.ca
www.steinbachcommunityfoundation.ca

TABLE OF CONTENTS

4	WHO WE ARE
5	REFLECTING ON OUR ACHIEVEMENTS
6	SCF ENDOWMENT FUNDS
8	SCF'S NEW VISION
10	SCF ANNUAL GENERAL COMMUNITY FUND
	<i>Granting for 2024</i>
	<i>enVision</i>
	<i>Aulneau Renewal Centre</i>
	<i>Steinbach Family Resource Centre</i>
	<i>Children's Rehabilitation Foundation inc.</i>
	<i>Steinbach Arts Council</i>
	<i>Steinbach Christian School</i>
13	LEGACY ESTATE PLANNING
	<i>What is a legacy gift?</i>
	<i>What is an endowment fund?</i>
	<i>Why make a legacy gift to SCF?</i>
	<i>How to make a legacy gift to SCF</i>
	<i>Tax benefits of all bequests.</i>
14	CELEBRATING SCF'S IMPACT
15	ENDOW MANITOBA GIVING CHALLENGE
16	BOARD BIOGRAPHIES
21	FINANCIAL STATEMENTS



WHO WE ARE AND WHAT WE DO

What do you care about? We care about it too! No matter what you're passionate about you can support it through The Steinbach Community Foundation Inc.

WHAT IS A COMMUNITY FOUNDATION?

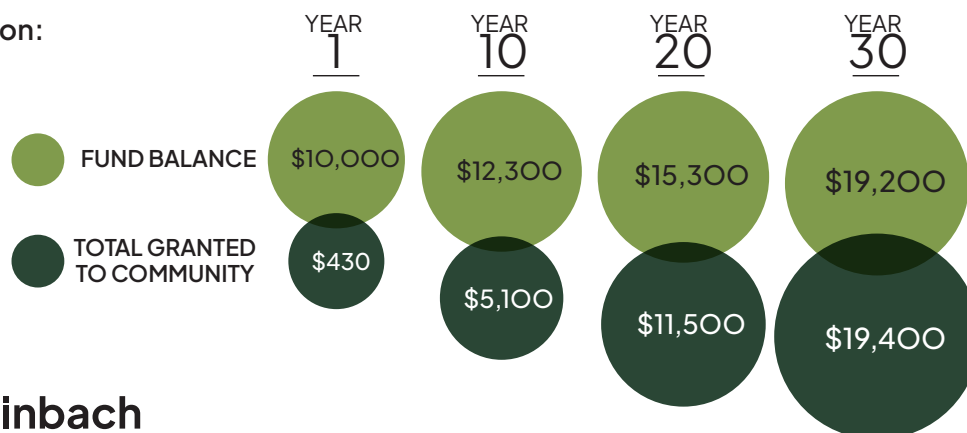
Community foundations are public charitable organizations, built through generous gifts of all sizes that are pooled and permanently invested in endowment funds. A portion of the interest earned from these endowment funds generates a sustainable source of support through grants made annually to charitable organizations and projects. SCF is in part an endowment-based organization, therefore your gift continues to give annually, forever.

A LASTING LEGACY: THE POWER OF ENDOWMENT

Because an endowment fund lasts forever, a gift to your community foundation is a powerful choice for supporting your hometown over the long term.

Consider this: if you make a one-time \$10,000 gift to a charitable organization, it will be spent on immediate needs. If you make a gift of \$10,000 to an endowment fund at your community foundation (of course you can make a gift of any size!) its impact will snowball over time. Contributing to an endowment at your local community foundation is a way to create a lasting legacy and ensure the causes you hold dear receive support forever!

Here's an illustration:



**Steinbach
Community
Foundation**

Multiplying Your Generosity Forever

Contributing to an endowment at your local community foundation is a way to create a lasting legacy and ensure the causes you hold dear receive support forever. For more information, contact us at 204.823.4521.

NEW SPEND DOWN DONOR ADVISED FUND SERVICE

The Steinbach Community Foundation Inc. is excited to announce we now offer time limited spend down donor advised fund services to assist donors in fulfilling their philanthropic goals. The Board wishes to help you give back to community by connecting you with the causes you care about. Please contact the SCF office to discuss the possibilities.

REFLECTING ON OUR ACHIEVEMENTS

A significant portion of our focus this year was board development and training. We enlisted the help of several key players in the community foundation sector to assist us in developing strategies, creating a new mission, vision, and value statement. This process led to the creation of a new logo and tagline: “Multiplying your generosity forever.” This exercise will help all board members effectively communicate the Foundation’s purpose and increase awareness in Southeast Manitoba.

We are engaged in discussions with a community foundation advisor to assist with granting strategies and making a larger impact in sharing how SCF is supporting community. By working with additional partners and donors in innovative ways, we aim to expand our opportunities for impact in the future.

We successfully created a video that showcases the direct impact of the grants the Foundation has provided to various groups. The video also serves as a testament to the gratitude of our partners and the strong relationships we have built.

Our first Will and Estate Planning session, “Creating Your Own Legacy,” was very well attended! The purpose of the session was to highlight the opportunity each individual has to make a lasting contribution and impact in perpetuity. We partnered with local professionals to discuss Will preparation and planning, as well as financial and taxation implications. We plan to offer this session annually to the general public.

In addition to our very successful granting evening in June, we participated in Endow Manitoba’s Giving Challenge. We secured matching partners and \$10,000, which enabled us to receive a total of \$25,469.38—our largest amount to date! We look forward to continuing this challenge annually and bringing in more partners.

In 2024, we received our first-ever ‘spend-down’ fund from an anonymous donor. This new concept for the Foundation allows a donor to ‘spend down’ the fund within a limited time, addressing needs they are passionate about in real time.

Thank you to our fundholders and donors. Your trust in our organization and your generosity has allowed us to continue our mission of fostering thriving communities. Your foresight and commitment to philanthropy empower us to support initiatives that improve the quality of life for all residents of southeast Manitoba.



And thank you to our grant recipients. Your dedication to serving others inspires us every day. Your innovative programs and tireless efforts have made a tangible difference in the lives of many, and we are proud to partner with you in this important work.

Looking ahead, the Steinbach Community Foundation has tremendous opportunities to expand and bring even greater impact to our region. We are excited about the future and the continued growth of our foundation.

Warm regards,

Mary Jane Hiebert, Chairperson
The Steinbach Community Foundation Inc.

SCF — ENDOWMENT FUNDS

The Steinbach Community Foundation (SCF) is a member of Endow Manitoba of The Winnipeg Foundation (TWF). TWF holds all SCF's endowment funds for investment purposes. Being a member of TWF not only provides the Steinbach Community Foundation with stronger interest rates and greater returns on investment, but it also provides the opportunity to work with Endow Manitoba. Endow MB offers professional training, educational resources, and support SCF may require to grow and flourish within the community foundation movement.

GENERAL COMMUNITY FUND

A Non-Designated Endowment Fund developed to support general community projects for the SCF catchment area as determined by the SCF Board. All grant decisions are made by the SCF's board in accordance with SCF's granting policy and CRA rules and guidelines.

ARTS STABILIZATION FUND

A Designated Endowment Fund created by Arts Stabilization Manitoba, Inc. to support the Steinbach Arts Council's internal operations regarding office equipment, computer software, and/or hardware, professional development, and/or engaging a consultant to improve organizational effectiveness.

MENNONITE HERITAGE VILLAGE HERITAGE FUND

An Agency Endowment Fund set up to support the long-term sustainable revenue for the day to day administrative work of MHV Museum. For every \$2 gift to the fund, the Manitoba Heritage Trust Program administered by The Winnipeg Foundation will stretch the gift with an additional \$1. If the funds available from the Manitoba Heritage Trust Endowment Fund are

insufficient to payout at the \$1 for \$2 rate, then stretch will be applied on a pro-rated basis. Deadline for qualifying gifts is September 30 each year.

MENNONITE HERITAGE VILLAGE SIGNATURE MUSEUM FUND

A Designated Endowment Fund founded by the Manitoba government to provide annual support for governance and management, operational standards, and enhancement of visitor experiences at the Mennonite Heritage Village Museum.

NAMED FAMILY FUNDS

Designated or Donor Advised Endowment Funds created and augmented by individuals or families. These fundholders have the ability to recommend grants made to support their preferred charity or field of interest.

SPEND DOWN DONOR ADVISED FUND

NEW

A Donor Advised Fund created with a single large gift that is spent within a set time, a strategy for donors to provide a greater benefit in a shorter amount of time.

Through the interest earned on the above endowment funds, SCF provides grants to support local projects and programs focused on youth, seniors, arts and culture, health, education, environment, sports and recreation.

These grants help improve community health and well-being.

THE CHRYSALIS FUND

A Donor Advised Fund created by a community of women philanthropists that strategically pool their resources and leverage them to impact specific causes and interest areas in the community and surrounding area.

The goals of The Chrysalis Fund are to encourage healthy development and increase the life skills of children, youth and their families. The Chrysalis Fund also provides opportunities for children and youth to learn, grow and give back to the community.



A Women's Giving Circle

chrysalisfund.ca

● ● ● ●

Contact the SCF office for more information on how to start
your own fund to address your passion for the community.

WWW.STEINBACHCOMMUNITYFOUNDATION.CA

SCF'S NEW VISION

Working with Cate Friesen of The Story Source, in 2024 The Steinbach Community Foundation board members created a new vision statement together with a whole new look!

GENERAL STATEMENT:



**Steinbach
Community
Foundation**

We help our community thrive equally, now and in the future, by supporting a legacy of generosity and caring that connects donors and community partners to answer the needs of our community.

Multiplying Your Generosity Forever

MISSION:

We promote philanthropy and deepen community partnerships to increase the capacity to support diverse charitable organizations in our community for generations to come.

We promote philanthropy through:

- Educating the public about endowment funds, estate and legacy planning
- Providing guidance to family foundations
- Reaching out to potential new donors

We foster community partnerships through:

- Connecting and deepening relationships with community builders, businesses, and local Chamber of Commerce
- Accessing support from Endow Manitoba, The Winnipeg Foundation, Community Foundations of Canada and Government agencies

We increase our support to diverse charitable organizations by:

- Increasing awareness regarding the grants we offer
- Building more connections with communities and charities that reflect the rich diversity of Southeast Manitoba



VISION:

We help our community thrive equally, now and in the future, by supporting a legacy of generosity and caring that connects donors and community partners to answer the needs of our community.



VALUES:

We do this work with a commitment to diversity and inclusion, possibility and opportunity for those who give and those who receive, in the spirit of joy and generosity.

NEW CATCHMENT AREA:

Many people in southeast Manitoba rely on services within the City of Steinbach and close surrounding area. Therefore, in response to the needs of this extended community and opportunities to participate in large government granting programs, The Steinbach Community Foundation Inc. is expanding its boundaries to include the following area:

East of Highway 75,
South of Highway 1,
West of the
Manitoba/Ontario border,
and **North** of the
United States border

**If you and/or your organization fall into this new designated area,
please feel free to contact the SCF office to discuss.**

SCF ANNUAL GENERAL COMMUNITY FUND

GRANTING FOR 2024

SCF General Community Fund granting by the Board takes place in spring, annually. The deadline for grant applications is March 31st 5pm. April, the SCF Board schedules 15-minute interviews with every applicant for a casual conversation to review the project, the organization, and build relationships. May, the SCF Board makes the final granting decisions. June, the SCF Board invites stakeholders, fundholders, donors, volunteers, past grant recipients, and the general public to a grant awards wine and cheese evening in celebration of all grant award recipients.

Please refer to the Grants section on The Steinbach Community Foundation Inc. website for a grant application form and information or contact the SCF office.

ENVISION

Digital Resource Lending Library

Welcome to the “first ever” digital lending library in southeast Manitoba! Here is a wonderful opportunity for enVision’s clients to “try out” devices before purchasing to ensure a suitable fit. Your gift fosters digital literacy among people with intellectual disabilities, by increasing independence, enhancing quality of life, reducing reliance on support staff, and creating greater inclusion with family and friends. Amount granted - \$8,118.00.

Congratulations and thank you for your dedication to details needed for independent living.



AULNEAU RENEWAL CENTRE

Creating Therapeutic Spaces

Your gift has helped create a safe and caring space in support of mental health for children of all developmental stages and ages with new sandtrays, sandtray toys, games, puppets, doll house, and various toy figurines. The Steinbach location is specific to helping those in southeast Manitoba to increase accessibility to resources and alleviate travel to Winnipeg. Amount granted - \$5,000.

Congratulations and thank you for supporting children's mental health.



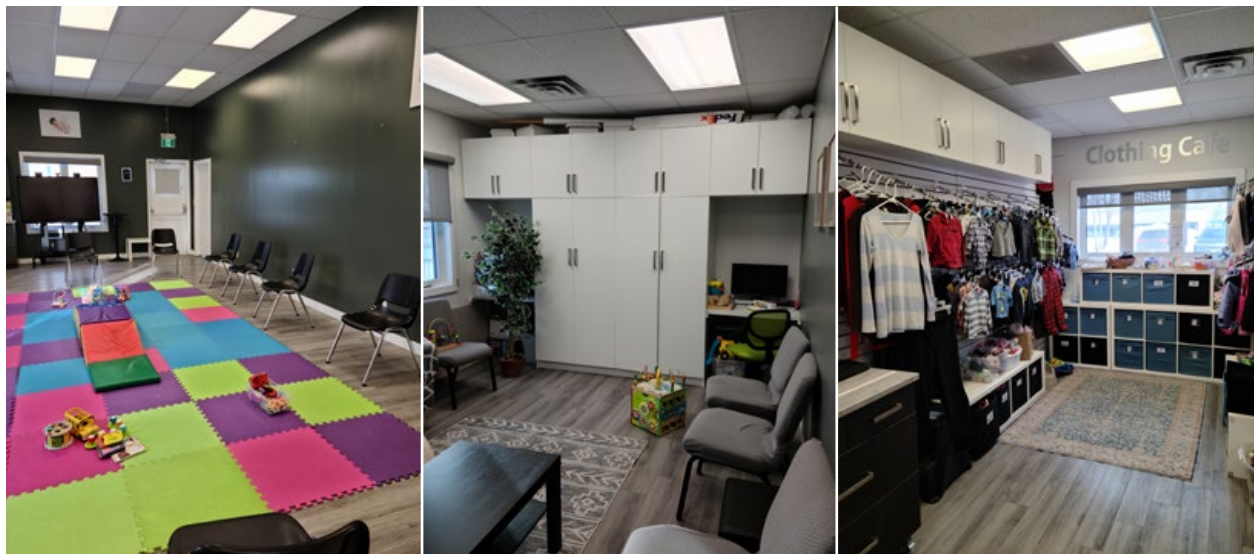
STEINBACH FAMILY RESOURCE CENTRE

Maintaining Support for Families

Your gift has improved SFRC workspace for both staff and clients by making improvements and repairs to the center, increasing storage and workspaces, plus adding new resource programming.

These projects help maintain SFRC's welcoming atmosphere while managing staff workspace, the income of donations for redistribution, and supporting the needs of families with high risk of barriers to health in the community. Amount granted - \$6,500.

Congratulations and thank you for your considerate and welcoming services for staff and clients.





CHILDREN'S REHABILITATION FOUNDATION

Wheelchair Mobility Accessory and iPad Communication Device

From wheelchair to all terrain vehicle. Not only does your gift change this young boy's life in Steinbach with a new ease and freedom in mobility and play, but you have helped others move up on the Children's Rehabilitation Foundation wait list. Plus, a new iPad gives a child from Blumenort a voice to better communicate with friends, family, and educators. Amount granted - \$2,129.00.

Congratulations on bringing joy and happiness to children's lives in Southeast Manitoba.

STEINBACH ARTS COUNCIL

Art Gallery Expansion Project

It is powerful to see community connecting through art. Art brings us together. With your gift SAC is able to professionally display and promote more artists in community. Enjoy the first gallery expansion project exhibit of a little 'past and present' celebrating the legacy of Kornelsen School through generations of student artwork. SCF partnered with the Carmen and James Koepke Family Fund on this project in support of arts and culture. Amount granted - \$2,958.00

Congratulations and thank you for bringing community together through art.

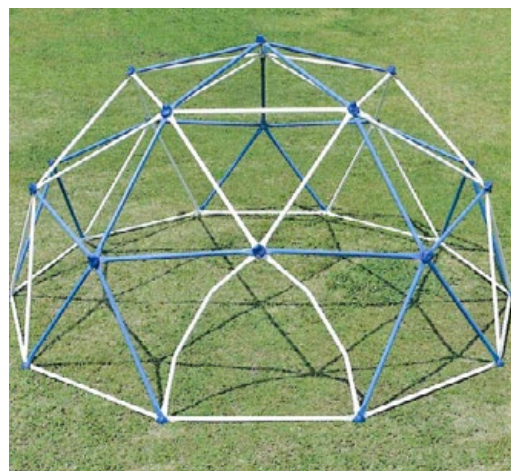


STEINBACH CHRISTIAN SCHOOL

Natural Fitness Playground

What better way to support outdoor play than by making a gift to the Steinbach Community Foundation! New natural playground equipment encourages children of all ages in creative play whether during school time or after hours. SCF partnered with the William & Agnes Lepp Family Fund on this project in support of education through programming and equipment. Amount granted - \$3,037.00

Congratulations and thank you for supporting health and wellness of community.



LEGACY ESTATE PLANNING

*The below is provided for information only; The Steinbach Community Foundation encourages you to seek guidance from a professional lawyer.

Plan now to create a legacy that reflects your life and help your community. For Good. Forever. A legacy gift can support the cause you are passionate about. Choose your cause, how you want to help, and a legacy gift will fulfill your future wishes.

WHAT IS A LEGACY GIFT?

A legacy gift is a future charitable gift through one or more of the following:

- Will
- Listed appreciated securities
- Life insurance
- Retirement assets (RRSP, RRIF)
- Charitable remainder trusts
- Residual interest

Legacy gifts to The Steinbach Community Foundation Inc. can be directed to an existing fund, or you can create your own endowment fund.

WHAT IS AN ENDOWMENT FUND?

An endowment fund is like an investment account for the community. Gifts are permanently invested and a portion of the income earned (the spending policy) is distributed every year to local registered charities as grants.

WHY MAKE A LEGACY GIFT TO THE STEINBACH COMMUNITY FOUNDATION?

There are a lot of great reasons. You can ...

- Make an impact in your community.
- Honour your values while supporting others.
- Support a cause you care about.

Since endowment funds are permanent, you will help community For Good. Forever.

HOW TO MAKE A LEGACY GIFT TO THE STEINBACH COMMUNITY FOUNDATION INC.

The most common legacy gift is a charitable gift through a Will (bequest). We are here to help you make sure that your gift supports what you care about ... because we care about it too!

We will document your instructions carefully to ensure that we use your gift as you intend. You or your lawyer may also wish to have us review any Will wording naming The Steinbach Community Foundation Inc. to ensure we fully understand your wishes and to confirm that we can administer your gift as you prefer. It is essential to remember to provide the lawyer drawing up your Will with the correct name and charitable registration number of any organizations named in your Will. The Steinbach Community Foundation's charitable registration number is 89432 2825 RR0001.

TAX BENEFITS OF ALL BEQUESTS.

Charitable bequests provide for your favorite cause with the potential of greatly reducing taxes owing and helping preserve the value of your estate.

CELEBRATING SCF'S IMPACT



Steinbach
Community
Foundation

In February 2024, the Steinbach Community Foundation (SCF) and the Steinbach Chamber of Commerce came together for a vibrant mixer at the Mennonite Heritage Museum, celebrating the remarkable impact SCF has on Southeast Manitoba. This exciting evening united approximately 135 local business leaders and organizations, fostering connections and inspiring collaboration.

Attendees had the opportunity to learn about SCF's vital role in the community, discovering why board members are passionate about their service and how individuals can contribute as volunteers or donors. The engaging atmosphere encouraged discussions on starting personal funds, empowering others to make meaningful contributions.

Guests were treated to a mouthwatering charcuterie display crafted by the MHV Auxiliary, featuring an array of delicious local meats, cheeses, breads, fruit, and pickles. It was a fantastic evening filled with networking, learning, and the shared commitment to enhancing our community—an inspiring reminder of what we can achieve together!

Mary Jane Hiebert and TDS Law Office were the sponsors for this evening



THOMPSON
DORFMAN
SWEATMAN



ENDOW MANITOBA GIVING CHALLENGE

November 12 – 17, 2024 was a great time to invest in southeast Manitoba!

The Steinbach Community Foundation reached their Endow Manitoba Giving Challenge Goal! Gifts made to the SCF General Community Fund during the Giving Challenge was stretched by Harvest Honda, TDS Law Office, Anne Barkman and David Banman, The Winnipeg Foundation, and the Manitoba government. **Thank you to all matching partners for an additional \$10,000 in matching monies. Now that's exciting!!**

total gifts	\$15,469.38
+ matching funds	\$10,000.00
<hr/>	
= Challenge total of	\$25,459.38

That's nearly \$3,000 more than last year. Thank you for your thoughtful and generous gifts.

The Steinbach Community Foundation (SCF) plays a vital, lasting role in all aspects of life in southeast Manitoba. Thanks to generous gifts from donors from all walks of life, the Foundation makes grants to a wide variety of worthy causes from daycares to seniors' homes, scholarships to school improvements, food banks to mental health, and more. Your one-time gift will grant out every year forever. That improves life for all of us.

Community foundations pool and endow (permanently invest) all monetary gifts, and the investment income earned supports a variety of projects within the Foundation's designated area, year after year after year. The original gifts (contributions) are never spent, only interest earned is spent (granted), ensuring a lasting legacy for donors and a permanent source of support for the community. The SCF General Community Fund is set up for charities to apply for grants which in turn will support their projects that address current needs of the community.

Canada's community foundation movement started in 1921 with the establishment of The Winnipeg Foundation. Today there are 58 community foundations in the province of Manitoba – more than a quarter of Canada's total. These foundations are part of Manitoba's history of generosity, a tradition in which we can all participate and take pride.



BOARD BIOGRAPHIES



MARY JANE HIEBERT, *SCF Board Chair*

Mary Jane was born and raised in Steinbach where she lives today, and she enjoys her cottage on the lake in Killarney.

Ms. Hiebert began her career in travel in 1994, with the purchase of Harvest Travel Ltd. in Steinbach, Manitoba. In 2014, Holiday Travel was acquired by Canada One travel, where until March 2020 she continued to fulfill her role as General Manager. Presently, Mary Jane is the Owner of Oyster Travel Services in Steinbach.

Mary Jane has a degree in Vocal Performance (BMus) from the University of Manitoba and has performed on stages throughout Canada and Europe. This combination has enabled her to combine her love of travel and music for the past 30 years.

Ms. Hiebert was the President of the Steinbach Chamber of Commerce from 2001 – 2007, a member of the original planning committee for the Summer in The City Festival in Steinbach, and currently sits on the Board of Directors of the Eastman Education Centre and Steinbach Campus Foundation.



TONY LENCHYSHYN, *Board Member*

With 26 years of expertise in commercial agriculture financing, Tony currently holds the position of Senior Relationship Manager at RBC, where he supports agricultural clients in reaching their financial goals. Tony's background also includes a decade in operations management and strategy in the hog industry, giving him a deep understanding of agricultural production and the unique challenges within it.

Beyond his professional work, Tony has dedicated over 25 years to coaching hockey in Eastman and Winnipeg, fostering skills, teamwork, and resilience among young athletes. His community involvement also extends to governance roles, having served six years on the Eastman Minor Hockey board, four years with ACL, and one year with the Envision Foundation, each role reflecting Tony's commitment to community growth and development.

Tony and his wife Lorie call Steinbach home, where they enjoy family life with their two sons, daughter-in-law, and two wonderful grandchildren.



SARAH BEAVER, *SCF Finance and Administration Chair*

Sarah Beaver, CPA, CGA is a partner of Gislason, Targownik, Peters Chartered Professional Accountants. She graduated at the top of her class in 2007 and earned the Professional Level Award of Excellence. Prior to getting her designation, Sarah worked for her family's business for many years, and enjoys being able to relate to her clients, as they discuss their challenges and successes.

In her spare time, she enjoys baking (as her hubby has taken over the cooking), cheering on the Dallas Cowboys, reading military science fiction, and acknowledges that she is a geek, but not a nerd.

Sarah also sits on the CPA Manitoba Appeals Committee and volunteers heavily with the Beaver family chauffeur organization. Her co-chair there is the family poodle named Yadi. Sarah was born, bred, and baptized in Steinbach, and believes in giving back to her community where she can.



DEB REMPEL, *Governance Chair*

Deb is a life-long resident of the City of Steinbach. She is married to Barry and together they have two married sons and six grandchildren.

In her spare time, she loves being with her grandchildren and enjoys the outdoors, long walks, and listening to music.

Deb enjoys helping others and being involved in the community through volunteering and lending a helping hand to those in need. Being involved in several organizations within the community continues to be my goal today. Deb expresses, "My heart is filled when I can help someone and make a positive contribution."

Deb is a member of The Chrysalis Fund – a local women's giving circle.

After being employed by the City of Steinbach for 29+ years, Deb recently retired from a job she loved. She now is happy to continue to be part of The Steinbach Community Foundation and looks forward to giving back to the community in this way.

BOARD BIOGRAPHIES



ANDREW WARKENTIN, *Director*

Andrew works at Thompson Dorfman Sweatman LLP as a lawyer and practices primarily in the areas of civil litigation, property and development, and municipal law. After graduating high school, Andrew moved to Winnipeg to complete his undergraduate degree in Criminology/Sociology, and later to Ottawa to complete his law degree.

Despite now living and working in Winnipeg, Andrew remains fond of his Steinbach roots. He can be found working from his firm's office in town on occasion and returns to Steinbach often to visit his friends and family. Andrew is pleased to serve on The Steinbach Community Foundation Board as his way to give back to the community of his birth that helped shape who he is as a person today.

In his spare time, Andrew enjoys playing hockey, softball, fishing, and attending local concerts.



LYNDA LAMBERT, *SCF Executive Director*

Lynda loves bringing people together in the community to work collectively towards the “common good”. Being the daughter of rural small business owners, community development and support have always been a top priority for Lynda and her family. Prior to joining The Steinbach Community Foundation Inc., she was a member of the Endow Manitoba Team at The Winnipeg Foundation for three years and worked in the Manitoba community foundation movement as the Morden Area Foundation Executive Director for six years. Lynda is new to the community of Steinbach and very excited to learn more about southeast Manitoba. Lynda enjoys riding motorcycle, fancies herself as an artist through painting and sewing, and loves hosting dinner parties with friends and family. Feel free to make an appointment with Lynda to chat about your area of passion for the community, and she will assist you with designating your monetary gift. You may also connect with her to discuss SCF granting opportunities, and how SCF can be of assistance in addressing the needs of community for southeast Manitoba.



(Retired 2025)

LINDSEY BANMAN, *Strategic Initiatives Chair*

Lindsey lives in Steinbach with her husband Matthew and their lovely daughter Norah and is a proud supporter of her home community. This was the reason for joining The Steinbach Community Foundation and wanting to make a greater impact in the lives of community members and organizations working tirelessly on creating healthy communities for all.

She works as the Member Relations Manager with the Steinbach Chamber of Commerce and receives much joy from interacting and forming relationships with local businesses that are enhancing the community through their own work.

Lindsey is always up for a great concert, especially while enjoying the Winnipeg Folk Festival with thousands of people. She never misses a season of playing on the Lorette Royals ringette team, which is a highlight of wintertime for her.

Lindsey and Matthew enjoy going on nearby flying adventures in their 1977 Grumman Cheetah airplane, which has often taken them to new places, meeting wonderful people and providing hilarious stories...often turning into a comedy sketch at the next friend's get-together!



CRYSTAL HILDEBRANDT, *Board Member*

Crystal's roots are in southeastern Manitoba where she gained invaluable insights into community care and responsibility. After some time in Winnipeg, she made her home in Steinbach, where her passion for community engagement continues to grow. Throughout her career, Crystal has had the privilege of connecting with a diverse array of people, businesses, and various groups within the community. Her commitment to service extends beyond her professional life, as she actively volunteers with minor sports teams and Eastman Immigrant Services.

Crystal's dedication to community development includes roles with various committees, including Steinbach Summer in the City, Steinbach Chamber of Commerce, Steinbach Arts Council, the Southeast Multiplex, and the Summer Games Bid Committee.

With her experience and commitment to community betterment, Crystal looks forward to contributing to the vision of the SCF board.

BOARD BIOGRAPHIES



(new in 2025)

KEN WIEBE, *Board Member*

Ken Wiebe lives in rural Manitoba just outside Grunthal with his wife and has retired after farming for 38 years. He enjoyed his time as a board member for Granny's Poultry for 24 years and for Menno Home for the Aged for 14 years. Ken is passionate about community building and creating a great place to live, work, and play. Ken loves spending time with his grandchildren, working in his shop, and working on general construction projects. He and his wife enjoy travelling worldwide, whether in Europe, South America, Mexico, or Canada.



ROBERT BANMAN, *Youth Representative*

Robert Banman is a student at Steinbach Regional Secondary School, where he excels both academically and athletically. Robert's interests in school are Mathematics and Sciences. He is also a dedicated volleyball player. Robert is known for his teamwork and commitment on and off the court. Outside of school, he wants to help others and improve his community for the future.

FINANCIAL STATEMENTS

2024 ANNUAL REPORT
Steinbach Community Foundation

STATEMENT OF FINANCIAL POSITION

AS AT DECEMBER 31

	2024	2023
	\$	\$
ASSETS		
CURRENT ASSETS		
Cash and cash equivalents	353,147	92,698
Restricted cash	-	170,778
Short term investments	100,000	-
Accounts receivable	66,676	1,851
	<u>519,823</u>	<u>265,327</u>
CAPITAL ASSETS (note 3)	2,639	2,853
FUNDS MANAGED BY THE WINNIPEG FOUNDATION (note 4)	<u>2,938,261</u>	<u>2,683,816</u>
	<u>3,460,723</u>	<u>2,951,996</u>
LIABILITIES		
CURRENT LIABILITIES		
Accounts payable and accrued liabilities	5,831	9,152
Grants payable	33,675	10,162
	<u>39,506</u>	<u>19,314</u>
DEFERRED CONTRIBUTIONS RELATED TO CAPITAL (note 7)	<u>35</u>	<u>454</u>
	<u>39,541</u>	<u>19,768</u>
NET ASSETS		
UNRESTRICTED NET ASSETS	480,316	75,235
RESTRICTED FUNDS (note 6)	2,938,261	2,854,594
INVESTMENT IN CAPITAL ASSETS	<u>2,604</u>	<u>2,399</u>
	<u>3,421,181</u>	<u>2,932,228</u>
	<u>3,460,722</u>	<u>2,951,996</u>

FINANCIAL STATEMENTS

STATEMENT OF OPERATIONS

	Year Ended December 31	
	2024	2023
	\$	\$
REVENUE		
Winnipeg Foundation grants	266,275	110,832
Other income	4,109	97
Donations	218,300	-
	<u>488,684</u>	<u>110,929</u>
EXPENDITURE		
Administrative expense	59,373	38,419
Grants approved	158,086	104,139
Advertising and promotion	8,553	12,190
Insurance	1,738	-
Professional fees	2,036	5,142
Office and supplies	21,693	6,438
Rent	5,871	5,837
Memberships	2,258	3,178
	<u>259,608</u>	<u>175,343</u>
EXCESS (DEFICIENCY) OF REVENUE OVER EXPENDITURE BEFORE AMORTIZATION	229,076	(64,414)
AMORTIZATION		
Current	1,980	1,773
Deferred contributions	(419)	(420)
	<u>1,561</u>	<u>1,353</u>
EXCESS (DEFICIENCY) OF REVENUE OVER EXPENDITURE	<u>227,515</u>	<u>(65,767)</u>

STATEMENT OF CHANGES IN NET ASSETS

	Year Ended December 31				
	Investment in Capital Assets	Consolidated Restricted Funds	Unrestricted Net Assets	2024 Total	2023 Total
	\$	\$	\$	\$	\$
NET ASSETS					
Balance, beginning of year	2,399	2,854,594	75,235	2,932,228	3,046,768
Excess (deficiency) of revenue over expenditure	-	-	227,515	227,515	(65,767)
New gifts	-	55,862	-	55,862	84,539
Net change in unrealized gains (losses)	-	223,780	-	223,780	125,911
Investment income	-	151,089	-	151,089	149,063
Administration fees paid	-	(46,557)	-	(46,557)	(42,524)
Interfund transfer	-	(177,771)	177,771	-	18,434
Grants paid	-	(122,736)	-	(122,736)	(384,196)
Capital asset purchases	1,766	-	(1,766)	-	-
Amortization	(1,561)	-	1,561	-	-
Balance, end of year	<u>2,604</u>	<u>2,938,261</u>	<u>480,316</u>	<u>3,421,181</u>	<u>2,932,228</u>



Steinbach Community Foundation

The Steinbach Community Foundation Inc.

Unit 1 - 385 Loewen Blvd.
Steinbach, MB R5G 0B3



204-823-4521



admin@steinbachcf.ca
www.steinbachcommunityfoundation.ca



STEINBACHCOMMUNITYFOUNDATION.CA